



B U S I N E S S B A Y

— BANER, PUNE —



A Project By : Saaj Buildcon Private Limited

"7 Business Bay," an exceptional commercial complex strategically situated in the bustling locality of Baner, Pune. Our meticulously designed spaces boast both expansiveness and luxurious amenities, creating an optimal environment for businesses of all sizes. Nestled in the prime area of Baner, this commercial hub provides an unparalleled setting for companies seeking a high-quality atmosphere to thrive.

Enjoy seamless connectivity with quick access to major destinations, including Pune University, Shivajinagar, and Deccan, making "7 Business Bay" a central point in the city's business landscape. Notably, the Mumbai-Bangalore Highway is a mere 7-minute drive away, enhancing accessibility and ensuring a prominent presence for your enterprise.

"7 Business Bay" doesn't just offer a prime location; it presents a lucrative investment opportunity for businesses aspiring to secure their own space and contribute to future growth. Position your company for success in a dynamic and thriving commercial hub that caters to the demands of modern enterprises.

Don't miss out on the chance to be part of this exceptional business ecosystem. Welcome to "7 Business Bay" – Where Your Success Begins!





SPECIFICATIONS

Structure

- Earthquake resistant RCC structure
- Light Weight Block Masonry– 6” for external & 4” for internal (Siporex or Equivalent)
- Internal Plaster with Gypsum finish (Vinayak, India Gypsum Equivalent)
- Sand faced plaster with attractive elevation

TILES

- Floor tiles: Vitrified 800mmx800mm RAK Or equivalent
- Wall tiles (Dry Balcony, Terrace, and Toilet: 300 X 300 mm or 300 X 450 mm Designer, Kajaria/Johnson equivalent)

FITTINGS

- Bathroom Fittings – Jaquar/equivalent
- Sanitary fittings – American standard/Hindware equivalent

PAINT

- Internal paint – Oil Bound Distemper
- External paint – Exterior Weather shield or equivalent

ELECTRICAL

- For Showroom & Offices- Provision of one point supply will be given. No internal electrification will be done.
- Electrical Fittings – Legrand / equivalent
- Cables – Polycab or equivalent

FACADE

- Structural Glazing with toughened glass

DOORS

- Rolling Shutters for Shops & Flush Doors for Offices

LIFT

- Automatic Elevator with backup (Schindler/Kone/Otis)

BACKUP

- Power backup for Lift and common areas.

SAFETY FEATURES

- CCTV with digital video recorder at the entrance lobby and in parking.

Special Provisions

- Attractive entrance lobby & Sufficient plantation
- Underground and overhead water tanks.
- Firefighting systems as per NBC norms
- Parking paver blocks
- Water pumps- Kirloskar, KSB Equivalent
- UGWT submersible pump Shakti equivalent
- Automated parking system





Crafting commercial spaces
that redefine excellence



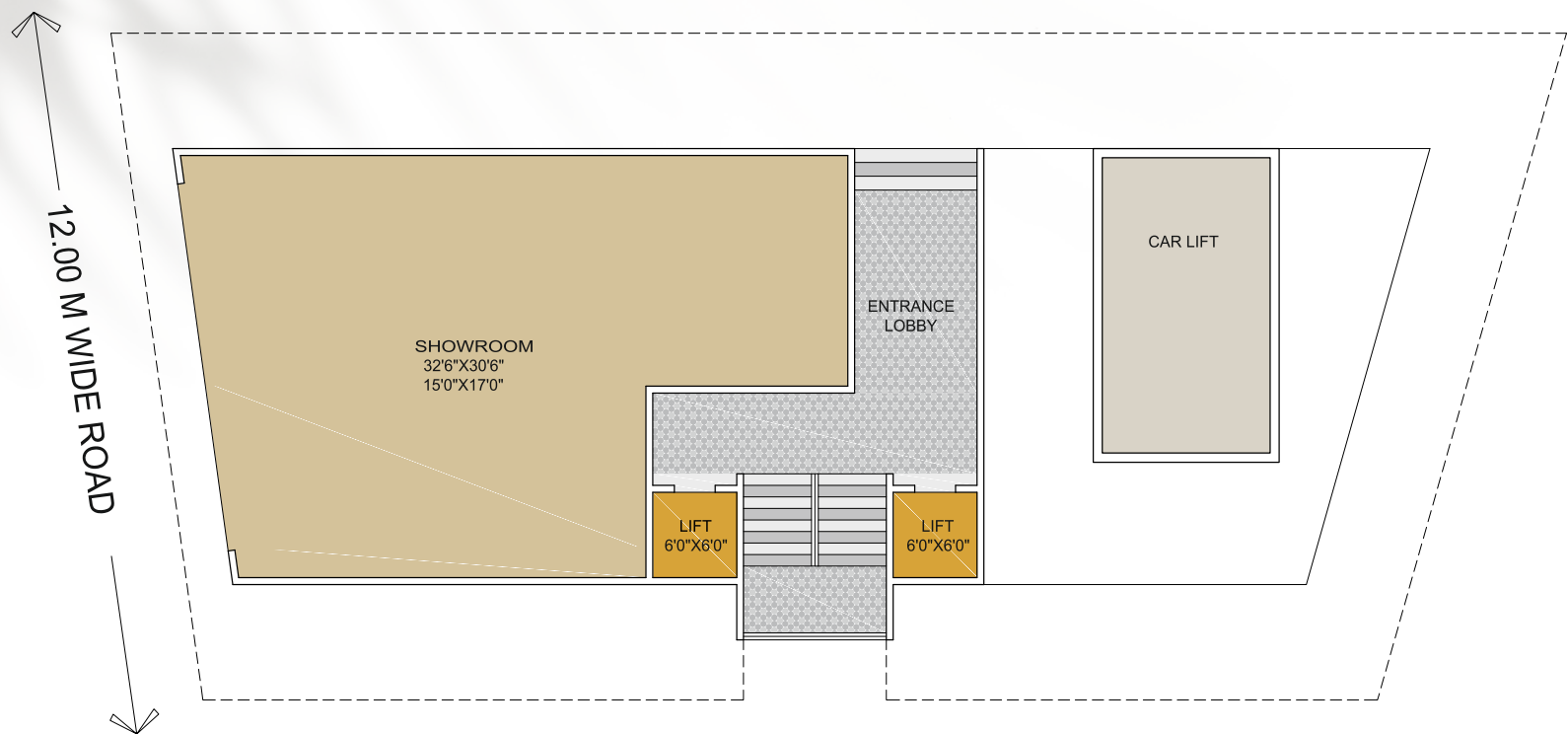
AMENITIES

- Plush Building with Modern Infrastructure and elevation
- 2 Latest Technology Lifts
- CCTV Cameras at entrance lobby and parking
- Security Cabin with EPABX System
- Elegant Entrance Lobby with Reception Area
- Vitrified Flooring of High quality
- All other Modern Amenities
- Landscaping at roof top
- Cafeteria at top terrace

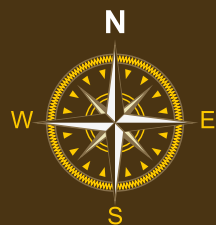
TO DREAM IS TO STRIVE FOR
A BETTER REALITY!



SHOWROOM



GROUND FLOOR PLAN

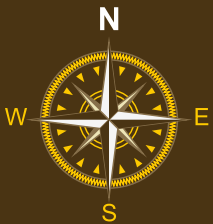
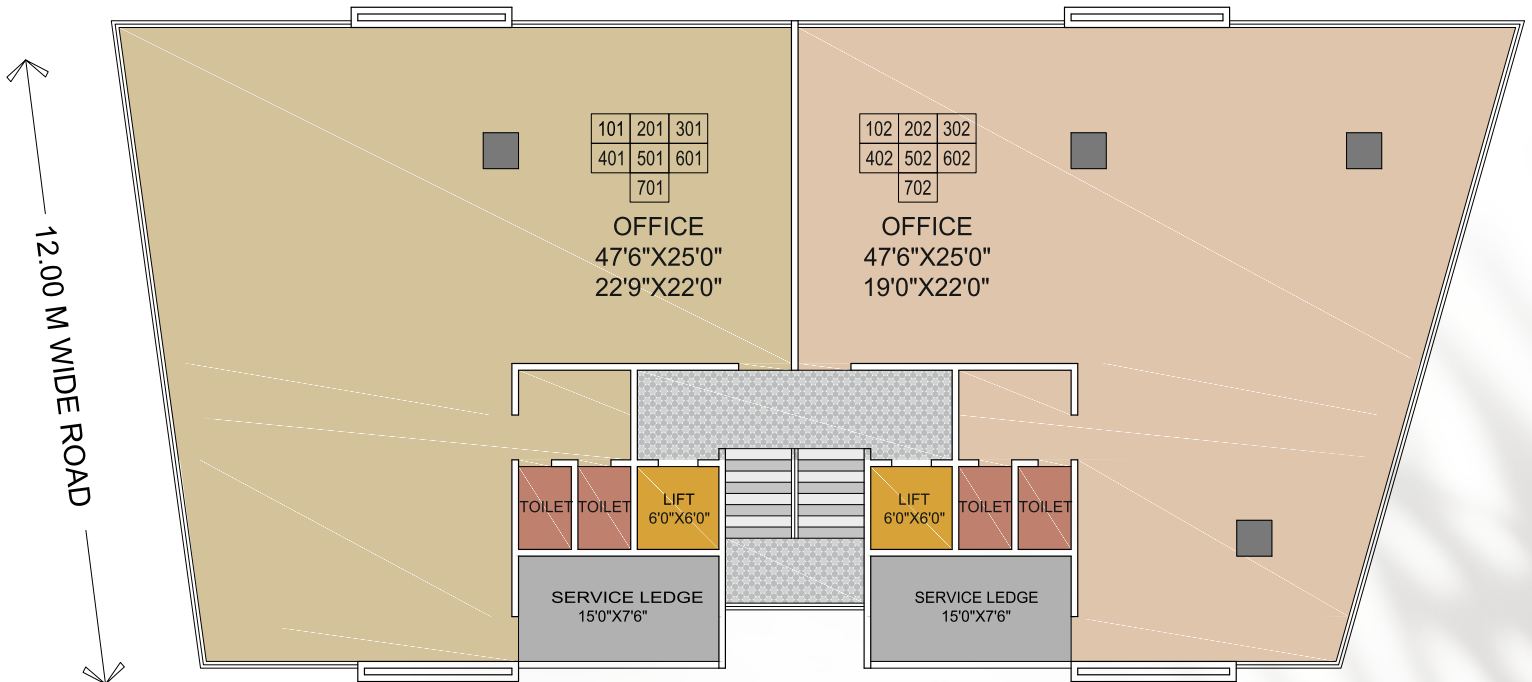


SR.NO	RERA CARPET AREA	SERVICE BALCONY	TOTAL CARPET
	sq.ft (A)	sq.ft (B)	AREA(C) sq.ft (A+B)
1	1200	0	1200

M/S. SAAJ BUILDCON PVT. LTD.

Proposed Commercial Building Typical Floor Plan (Ground Floor)

OFFICES



SR.NO	RERA CARPET AREA sq.ft (A)	SERVICE BALCONY sq.ft (B)	TOTAL CARPET AREA(C) sq.ft (A+B)
401 / 501 / 601 / 701	1841	115	1956
402 / 502 / 602	1841	115	1956
TOTAL	3682	230	3912

M/S. SAAJ BUILDCON PVT. LTD.

Proposed Commercial Building Typical Floor Plan 1st To 7th Floor



A Project By
SAAJ
BUILD CON PRIVATE LIMITED

📍 Site Add : Sr. No. 272/7 Baner, Pallod Farms 2, Next to Amar Montreal Business Center, Pune: 411045

📍 Reg. Add : 40/22, Janhavi Apartment, 1st Floor, Bhonde Colony, Pune: 411 004

✉ admin@saajbuidcon.com | sales@saajbuidcon.com

☎ +91 98230 80336

RERA NO: P52100052938 <https://maharera.mahaonline.gov.in/>



Disclaimer: Every reasonable care has been taken while preparing this Brochure. However, the developer/promoter and its agents shall not be held responsible or liable for any inaccuracy in its contents. All representations are believed to be correct and as envisaged by the developer/promoter. However, since the project is under evaluation there is a possibility that there may be certain changes in the representations made in this brochure. All artrendings, illustrations, photographs and pictures contained in this brochure are an artist's impression only and the same should not be construed to be the final images/views of the final project. The printed material does not constitute a contract/offer of any type between the developer/promoter and the recipient. Exact details related to the project shall be enumerated in the sale and purchase agreement that shall be entered into between the developer/promoter and the purchaser and shall supersede all statements, documents or representations made prior to signing of such sale and purchase agreement. *Terms & Conditions apply.

